

HOUSING FOR SENIOR CITIZENS IN BARCELONA

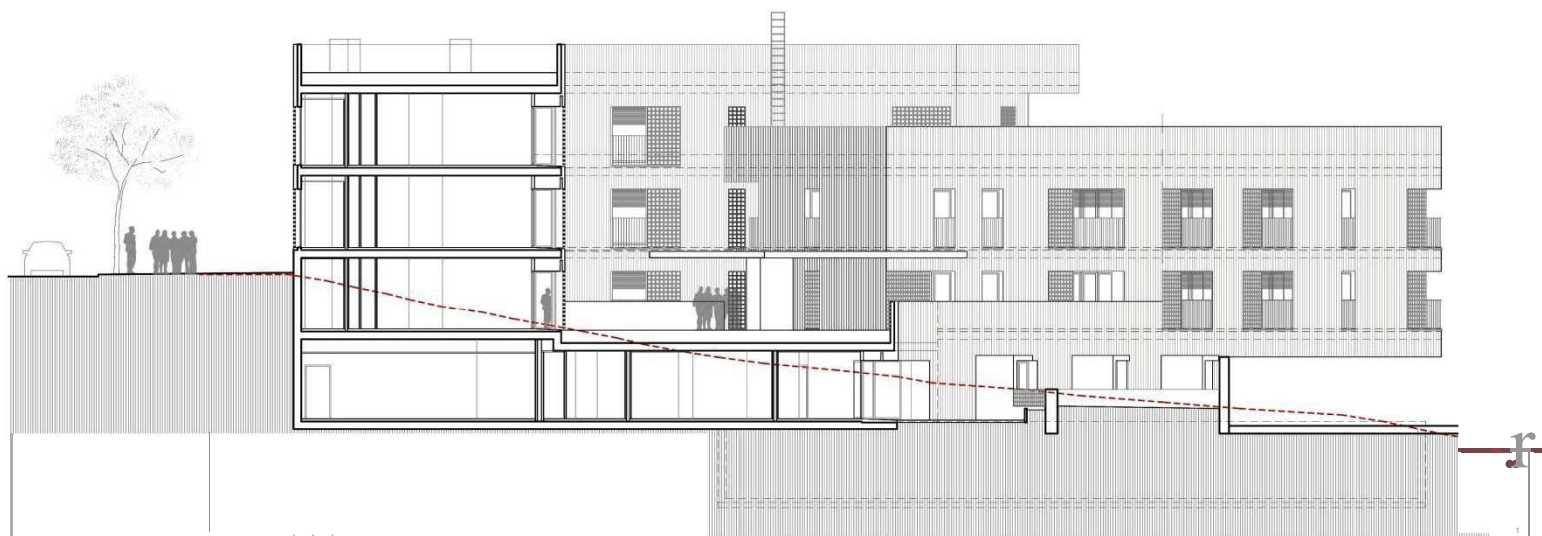
Pere Joan Ravetllat, Carme Ribas, Nicolás Markuerkiaga

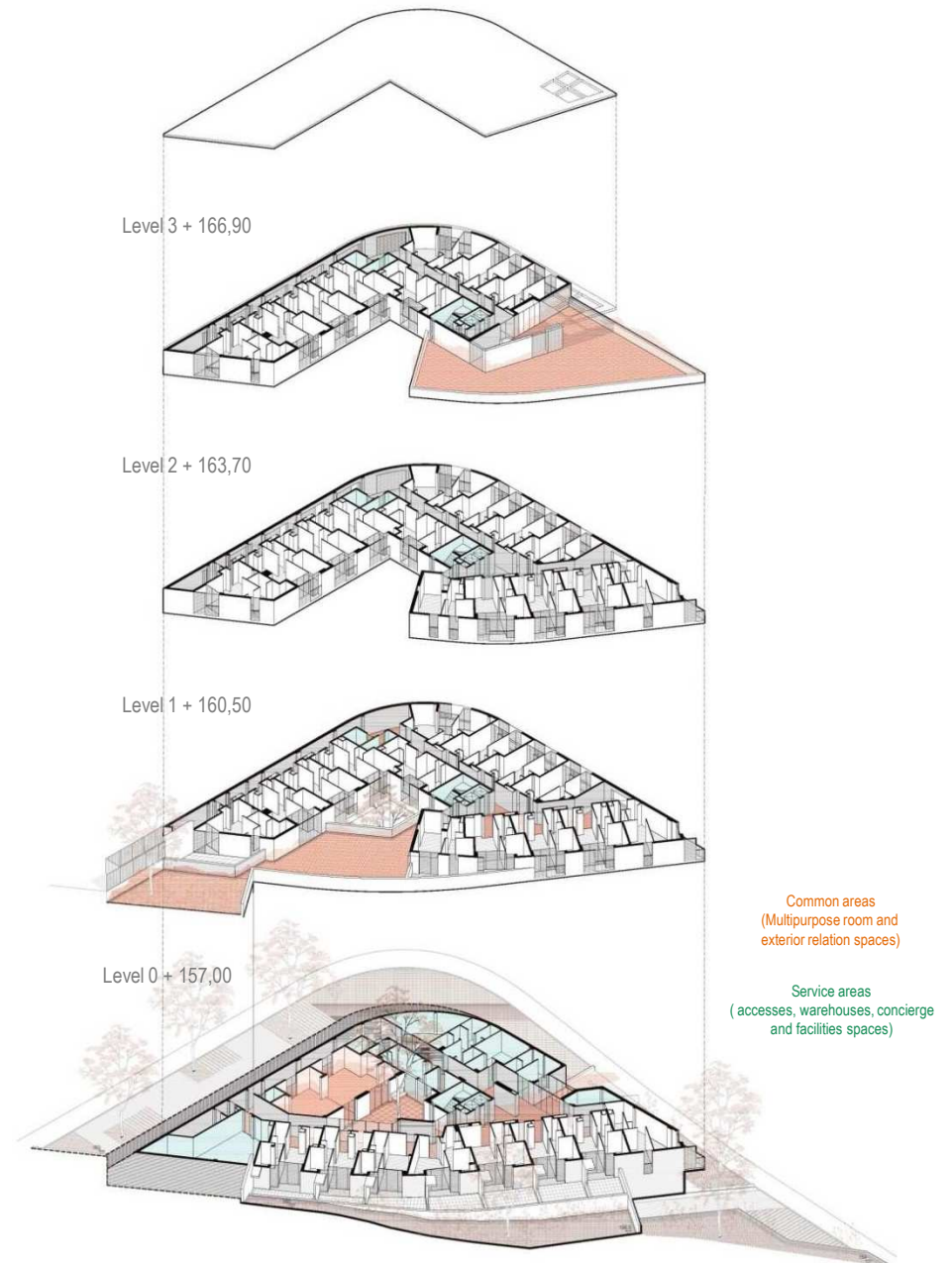
2011-2017



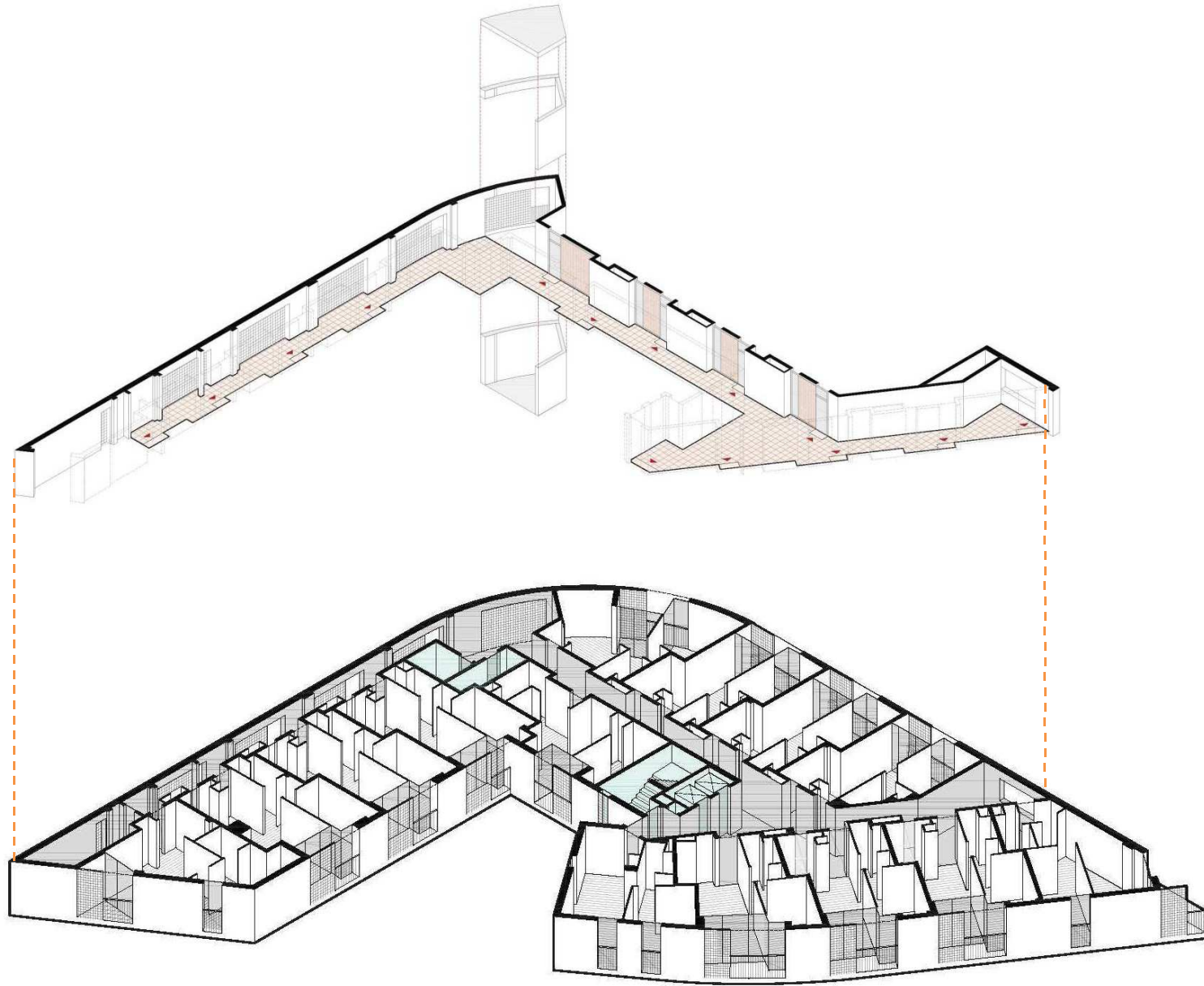


Situation / Section / Relationship with the surroundings

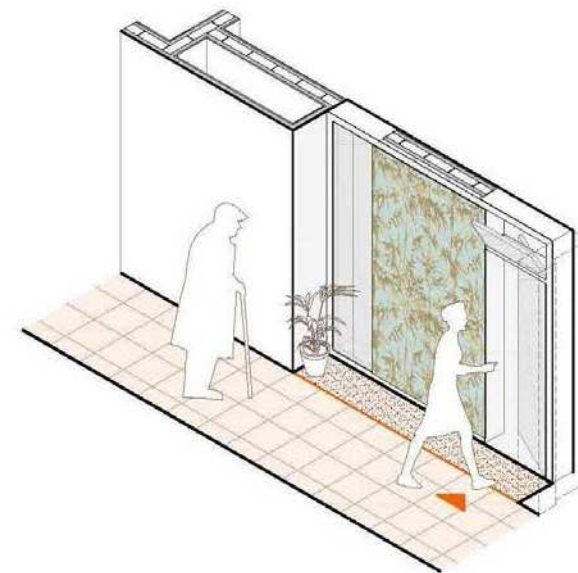




Exploited axonometry



Distribution corridor



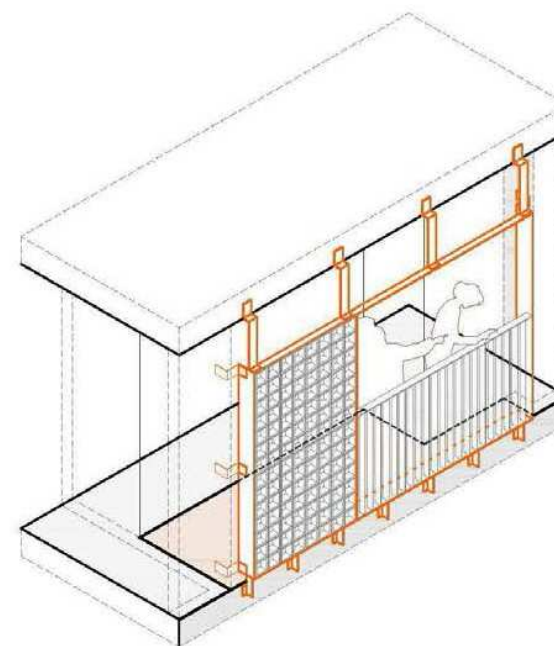
Access

Appartment type



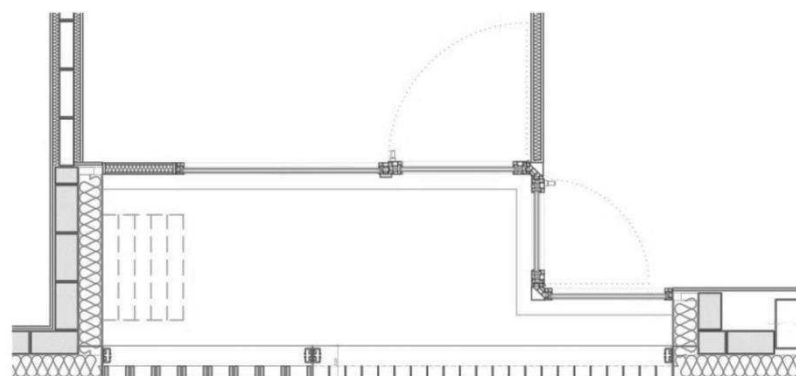
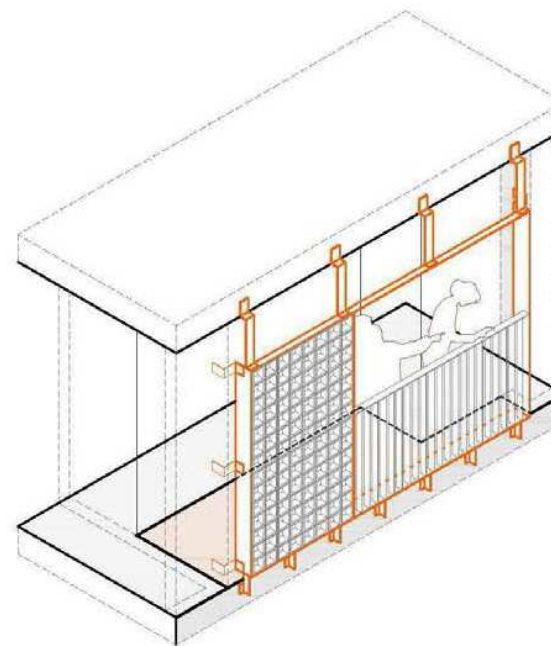
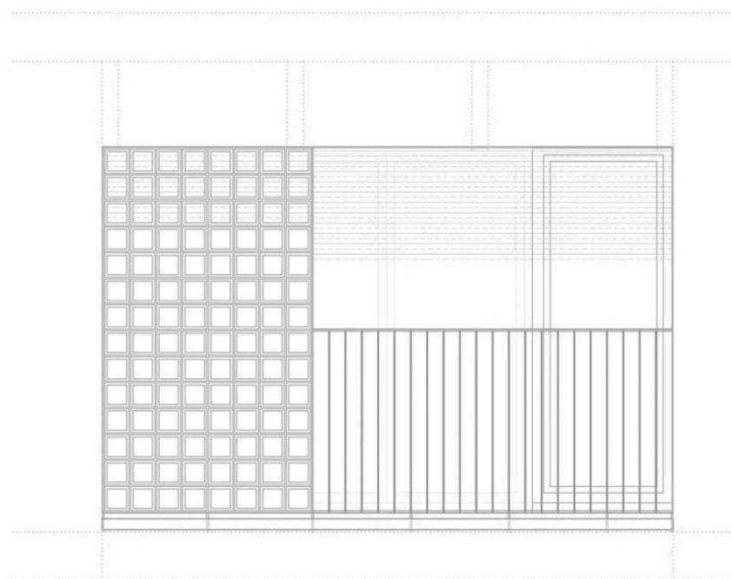
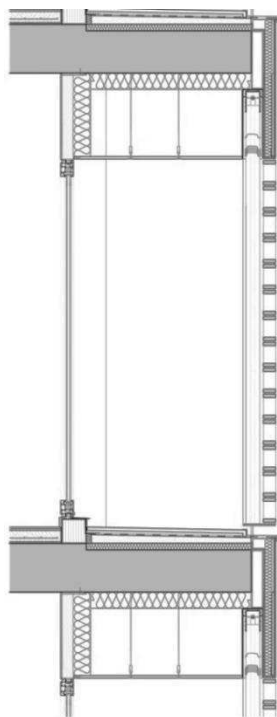
Access

Appartment type



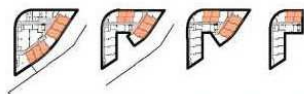
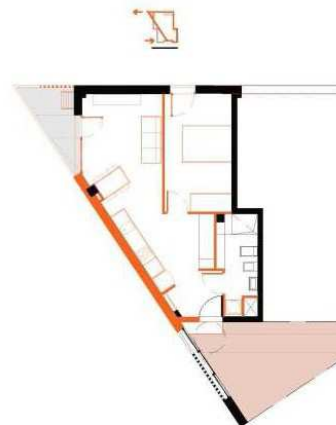
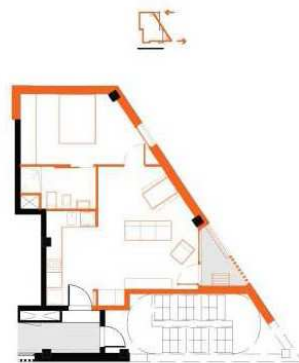
Balcony

Appartment type



Balcony

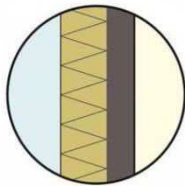
Appartment type



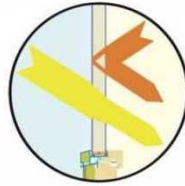
Adaptability

Appartment type

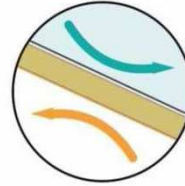
The **Passivehaus buildings** are those in which the **interior comfort conditions with minimal energy consumption** are achieved throughout the year. It is not a question of techniques or concrete materials but of taking into account a whole series of rigorous requirements in the design and execution of the work.



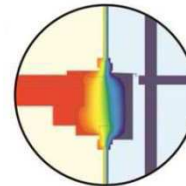
Thermal insulation



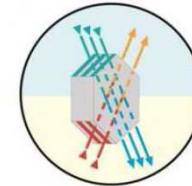
Openings



Impermeability



Thermal bridges reduction

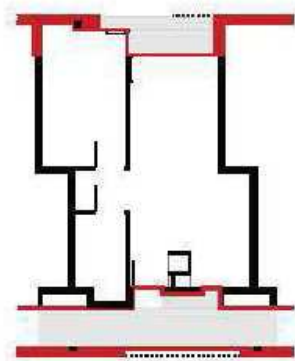


Adequate ventilation strategy

PassivHaus Criteria

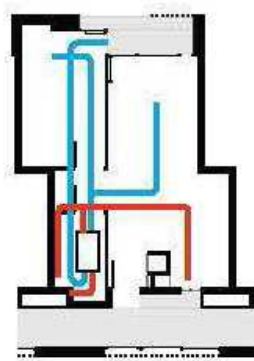
Appartment type

The **Passivehaus buildings** are those in which the **interior comfort conditions with minimal energy consumption** are achieved throughout the year. It is not a question of techniques or concrete materials but of taking into account a whole series of rigorous requirements in the design and execution of the work.



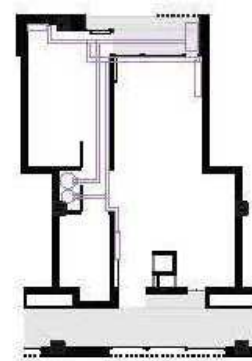
Insulation and impenetrability

1



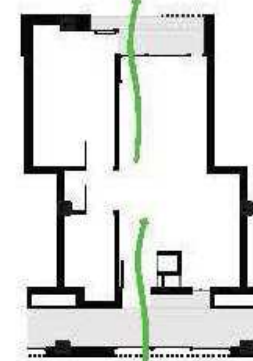
Air renewal

2



Athermal

3



Cross ventilation

4

PassivHaus Criteria

Appartment type



HOUSING FOR SENIOR CITIZENS IN BARCELONA

Pere Joan Ravetllat, Carme Ribas, Nicolás Markuerkiaga

2011-2017